



THE GEO H. HEWITT CO. LIMITED

2125 - 575 Seaborne Avenue, Port Coquitlam, B.C. V3B 0M3 | TEL: 604-294-6288 | FAX: 604-294-5401

Visit our website at www.geohewitt.com



LETTERS & LOGOS

PLASTIC: Flat cut acrylic for indoor or outdoor applications.

1/8" to 1-1/2" thick in single piece heights from 1" to 46". Available in 45 standard colours or can be painted in any custom colour. Plastic injection molded letters and logos are also available with prismatic or rounded faces for a 3 dimensional look.

LAMINATED: Flat cut acrylic or foam, laminated with either .030" thick metal faces or 1/8" thick acrylic faces for indoor applications only.

(Acrylic) 1/8" to 1-1/2" thick in single piece heights from 2" to 46". (Foam) 1/2" to 3" thick in single piece heights from 2" to 25". 15 standard metal face finishes. 45 standard acrylic face colours or can be painted in any custom colour. For letters & logos with metal faces, the sides of the letters or logo can be painted in any standard colour to compliment or accent the face.

METAL: Flat cut metal for indoor or outdoor applications.

Aluminum: 1/8" to 1" thick in letter heights from 1" to 30". Can be supplied with one of 3 brushed, a polished or one of 7 anodized brushed or polished finishes or can be painted in one of 45 standard or any custom colour.

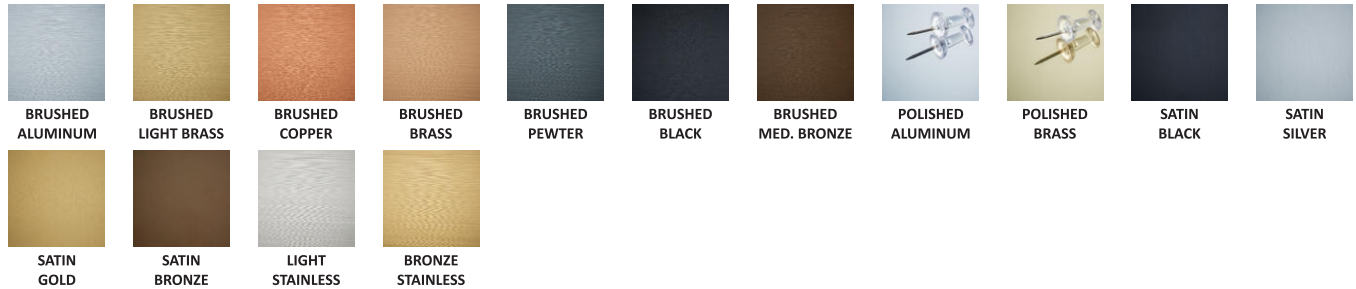
#304 Stainless Steel: 1/8" to 3/8" thick in letter heights from 1" to 30". Can be supplied with a brushed or polished finish.

Brass: 1/4" to 1/2" thick in letter heights from 1" to 30". Can be supplied with a brushed, polished or one of 3 different oxidized finishes.

Bronze: 1/4" to 1/2" thick in letter heights from 1" to 30". Can be supplied with a brushed, polished or one of 3 different oxidized finishes.

Cast Aluminum and Cast Bronze Metal Letters are also available with prismatic faces for a 3 dimensional look.

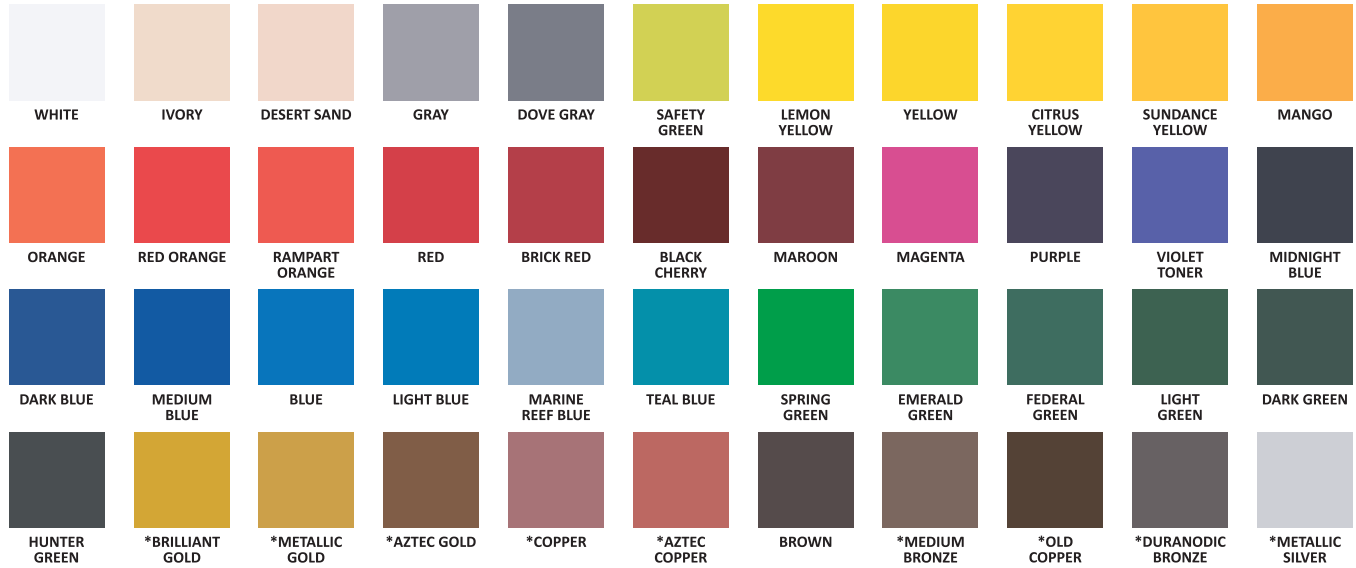
METALLIC LAMINATED LETTER AND LOGO FINISHES AVAILABLE. (.030" THICK METAL LAMINATE ON FACE OF LETTER ONLY)



SOLID ALUMINUM LETTER AND LOGO FINISHES AVAILABLE. (ANODIZED FINISHES AVAILABLE IN A BRUSHED OR POLISHED FINISH)



STANDARD PAINT COLOURS FOR PLASTIC, LAMINATED AND METAL (ALUMINUM) LETTERS (THE FACE, THE SIDES OR BOTH CAN BE PAINTED).



ALL PAINT COLOURS ARE UV RESISTANT FOR INDOOR OR OUTDOOR APPLICATIONS. SUPPLIED IN A FULL GLOSS FINISH EXCEPT FOR THOSE INDICATED WITH AN * WHICH WILL BE SUPPLIED IN A SEMI-GLOSS FINISH.

BLACK