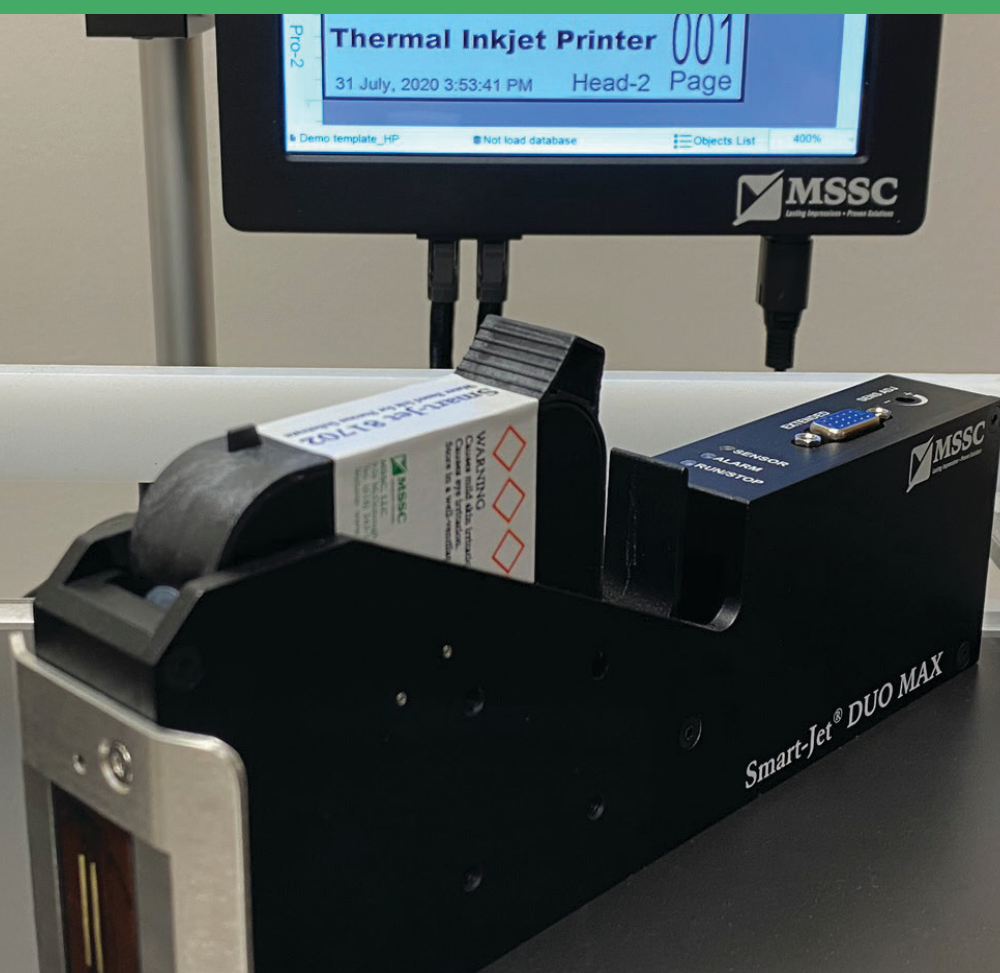


SMART-JET® DUO MAX

THE MAX GIVES YOU THE MOST.

For the maximum print coverage, use the Smart-Jet® DUO MAX.

When your printing requirements require the maximum coverage area, the Smart-Jet® DUO MAX has massive appeal. Paired with the DUO Controller, the MAX gives you the opportunity to code 1" tall messages on both sides of a product! It allows you to print everything from text, counter, box/lot and expiration date to Julian date, shiftcode and barcodes. And while you get the benefit of free-design within a 1" template area, there's also the advantage of printing online data and integrating with other devices such as a PLC, camera and checkweigher. That's a maximum amount of advantages you get with the SMART-JET® DUO MAX.



THE GEO H. HEWITT CO. LIMITED

2125 - 575 Seaborne Avenue, Port Coquitlam, B.C. V3B 0M3 | TEL: 604-294-6288 | FAX: 604-294-5401

Visit our website at www.geohe Witt.com

SMART-JET® DUO MAX

THERMAL INKJET CODER

Features:

- Text, Counter, Box/Lot, Datetime, Expiry Date, Julian Date, Shiftcode, Image, Database (TXT, CSV, SQL, MySQL, SQLite, JSON)
- Barcodes (Code 11, Code 39, Code 128, EAN, QR, Datamatrix, GS1 Datamatrix)
- POD (Print online data)
- Free design in template up to 2" (50.8mm), 2 head
- Integrate with other devices (PLC, Camera, Checkweigher) via RJ45
- Real-time Printing
- WYSIWYG (What You See Is What You Get)
- Data upload, Backup & Recovery via USB
- Built-in sensor
- External Sensor, Encoder and Alarm beacon
- Maximum length of template up to 78.74" (2m)
- English (default), German, Vietnamese, Chinese, Korean, and Russian
- Store up to 8GB template on the printer's memory
- Windows true fonts
- Automatic recognition of ink type and ink parameters
- Nozzle warming, auto-jet and self-cleaning capabilities to extend cartridge lifetime
- Nozzle status checking
- Solvent ink for porous and non-porous material
- Aqueous ink for printing on porous and semi-porous material
- Support various colors of ink: ●

Specifications:

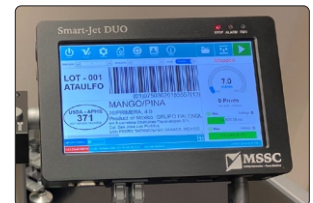
- **Dimensions:** (L x W x H): Controller 7.6" x 5.1" x 1.4" (192mm x 130.5mm x 34.5mm), Print Head 8.5" x 1.9" x 3.1" (216.70 x 49.20 x 77.80 mm)
- **Weight:** Controller 2 lbs. (888 grams), Print Head max 0.9 lbs. (430 grams)
- **Display:** 7" touchscreen screen
- **Power Supply:** AC 100-240 V, 50/60 Hz, DC 24V 2.5A, Maximum power consumption: 60W
- **Resolutions:** Max 300 x 600 dpi
- **Print speed:** Max 249 ft. (76m)/min @ 300 x 300 dpi
- **Density:** Up to 3 levels of optical density
- **Throw Distance:** Up to 0.2" (5mm)
- **Operating Conditions:** Temperature 41°-122°F (5-50°C) and 90% air humidity, non-condensing



Pieces included in each printhead box



Connect up to 2 printheads at one time



Message on 7" Touchscreen



TIJ 1" cartridge technology



Porous and non-porous print